

Improvements necessary to
 from the Athens-Clarke
 County sewer collection
 system installed and have
 ownership, operation, and
 an amount sufficient to
 and dedication of the

- IPF - IRON PIN FOUND
- IPS - IRON PIN SET
- - TRAVERSE POINT
- CM - CONCRETE MONUMENT

CURVE TABLE

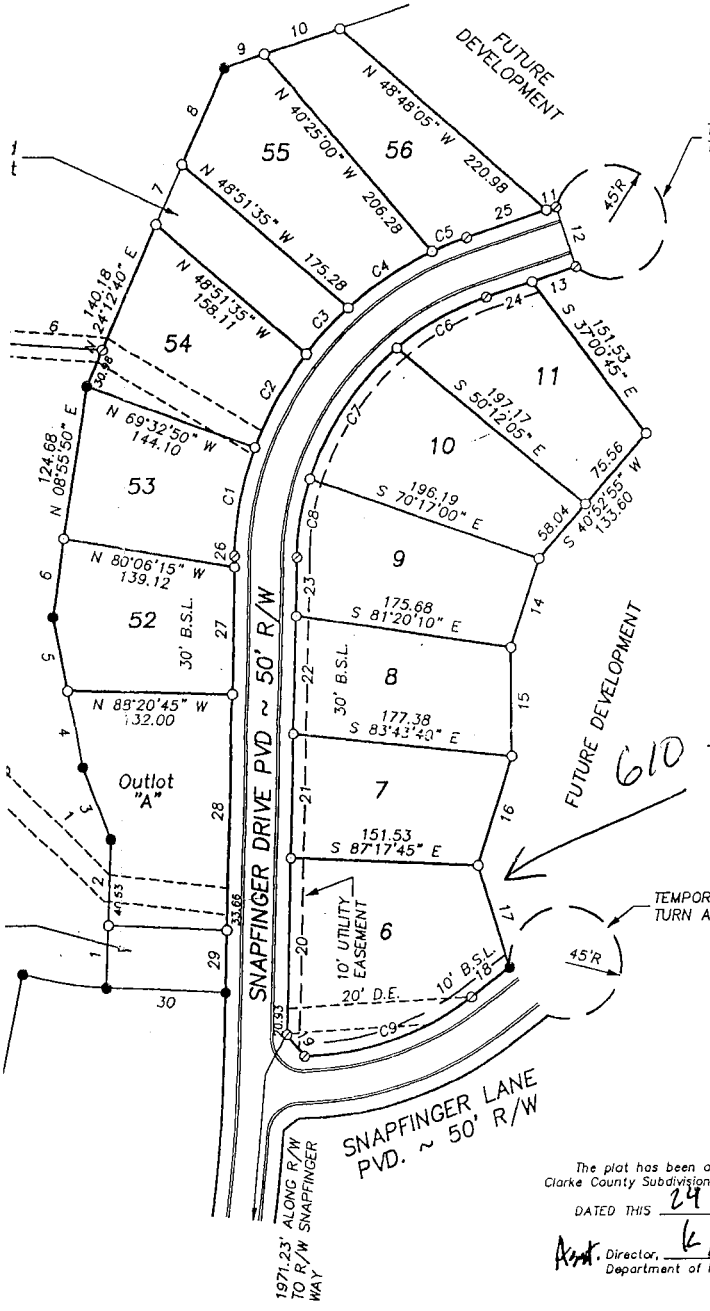
CURVE	BEARING	CHORD	ARC	RADIUS
C1	N 11°00'25" E	89.38	89.78	275.00
C2	N 29°15'10" E	85.02	85.36	275.00
C3	N 43°21'55" E	50.04	50.11	275.00
C4	N 57°07'40" E	81.70	82.00	275.00
C5	N 68°47'10" E	29.90	29.92	275.00
C6	S 61°17'15" W	82.90	83.38	225.00
C7	S 34°25'05" W	125.95	127.65	225.00
C8	S 09°54'35" W	64.61	64.84	225.00
C9	N 70°47'30" E	143.15	145.68	225.00

LINE TABLE

LINE	BEARING	DISTANCE
1	N 02°20'10" E	50.00
2	N 02°12'00" E	69.70
3	N 20°47'00" W	62.07
4	N 10°43'45" W	62.71
5	N 10°43'45" W	60.68
6	N 08°16'20" E	63.61
7	N 24°12'40" E	52.26
8	N 24°12'40" E	83.63
9	N 71°54'10" E	33.68
10	N 71°54'10" E	64.00
11	N 71°54'10" E	8.18
12	S 18°05'50" E	50.00
13	S 71°54'10" W	37.55
14	S 18°10'35" W	75.33
15	S 00°03'40" W	87.57
16	S 17°35'10" W	92.17
17	S 16°39'50" E	85.44
18	S 52°20'05" W	39.25
19	N 37°31'55" W	22.53
20	N 01°39'15" E	142.27
21	N 01°39'15" E	100.13
22	N 01°39'15" E	94.69
23	N 01°39'15" E	47.67
24	N 71°54'10" E	38.94
25	S 71°54'10" W	68.31
26	S 01°39'15" W	8.99
27	S 01°39'15" W	102.52
28	S 01°39'15" W	190.07
29	S 01°39'15" W	50.01
30	N 87°17'50" W	96.16

ESM'T. LINE TABLE

LINE	BEARING	DISTANCE
1	N 44°07'00" W	117.94
2	N 81°20'40" W	132.97
3	S 51°31'50" W	121.58
4	S 49°55'00" W	148.83
5	S 71°52'50" W	47.50
6	N 85°44'45" W	78.74
7	N 75°56'45" W	41.11
8	S 87°54'55" W	119.83
9	N 65°39'05" W	95.89
10	N 70°02'50" W	35.26
11	S 81°22'35" W	51.32
12	S 66°21'30" W	134.53
13	S 69°25'40" W	28.82



The plat has been approved in accordance with the Athens-Clarke County Subdivision Regulations.

PLAT RECORDED
 IN PLAT BOOK 34 PAGE 307

DATED THIS 24 DAY OF Sept. 19 98

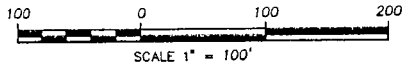
THIS 24 DAY OF Sept 19 98

Director, Department of Planning

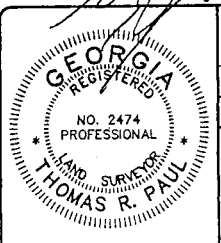
CLERK

This plat is true and correct as improvements shown thereon, and was of the properly made by me or under my supervision and the monuments shown hereon actually exist, and the material are correctly shown. The plat is based on a closure precision of 1/100,000 and an angular error of 3" per 1519' rule. This plat was used to be accurate within one foot in a total of 4.342 acres. The linear and angular measurements herein

I HEREBY CERTIFY THAT THIS PLAT IS A TRUE AND CORRECT REPRESENTATION OF THE LAND PLAT AS PREPARED IN CONFORMANCE WITH THE MINIMUM STANDARDS AND REQUIREMENTS OF LAW.



2nd Surveyor
 Date of expiration 12-31-98



SURVEY FOR: SECTION 7 ~ PHASE 3
SNAPPINGER WOODS

COMD: 217	COUNTY: ATHENS-CLARKE	STATE: GEORGIA	DATE: 06-30-98
THEODORE: TOPGUN	DIST. EQUIP.: 1/28,100'	ANGLE CLOSURE: 3" ANGLE	ADJUSTMENT: NONE

SURVEYED BY:
PAUL & EVANS
 LAND SURVEYING, INC.
 P.O. BOX 262
 LEXINGTON, GA. 30648
 706-743-5208

ADJ. CLOSURE: 1/28,100'
 DRAWN BY: EVANS
 DRAWING NO.: SWS7PJ
 FIELD BOOK: TDS

